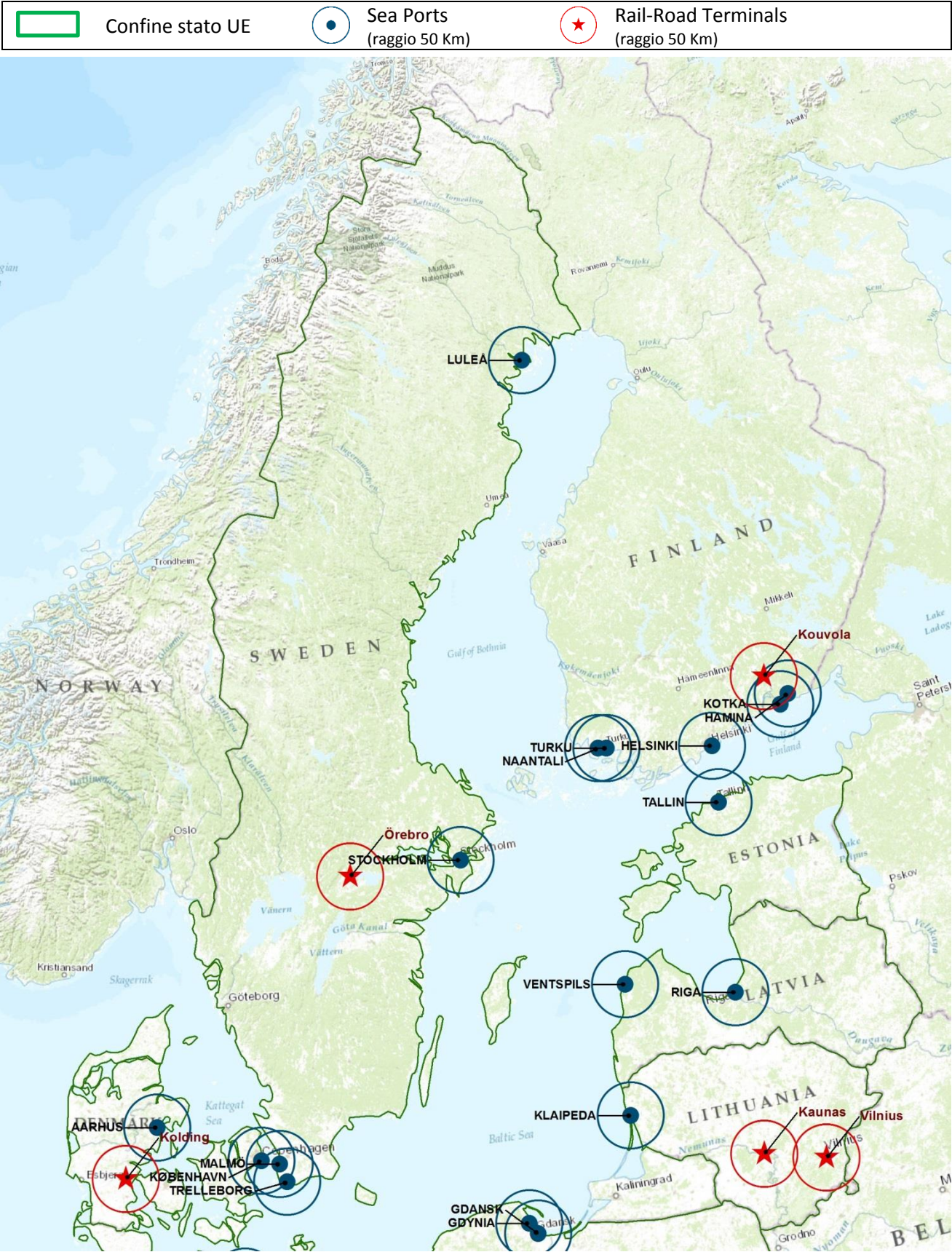


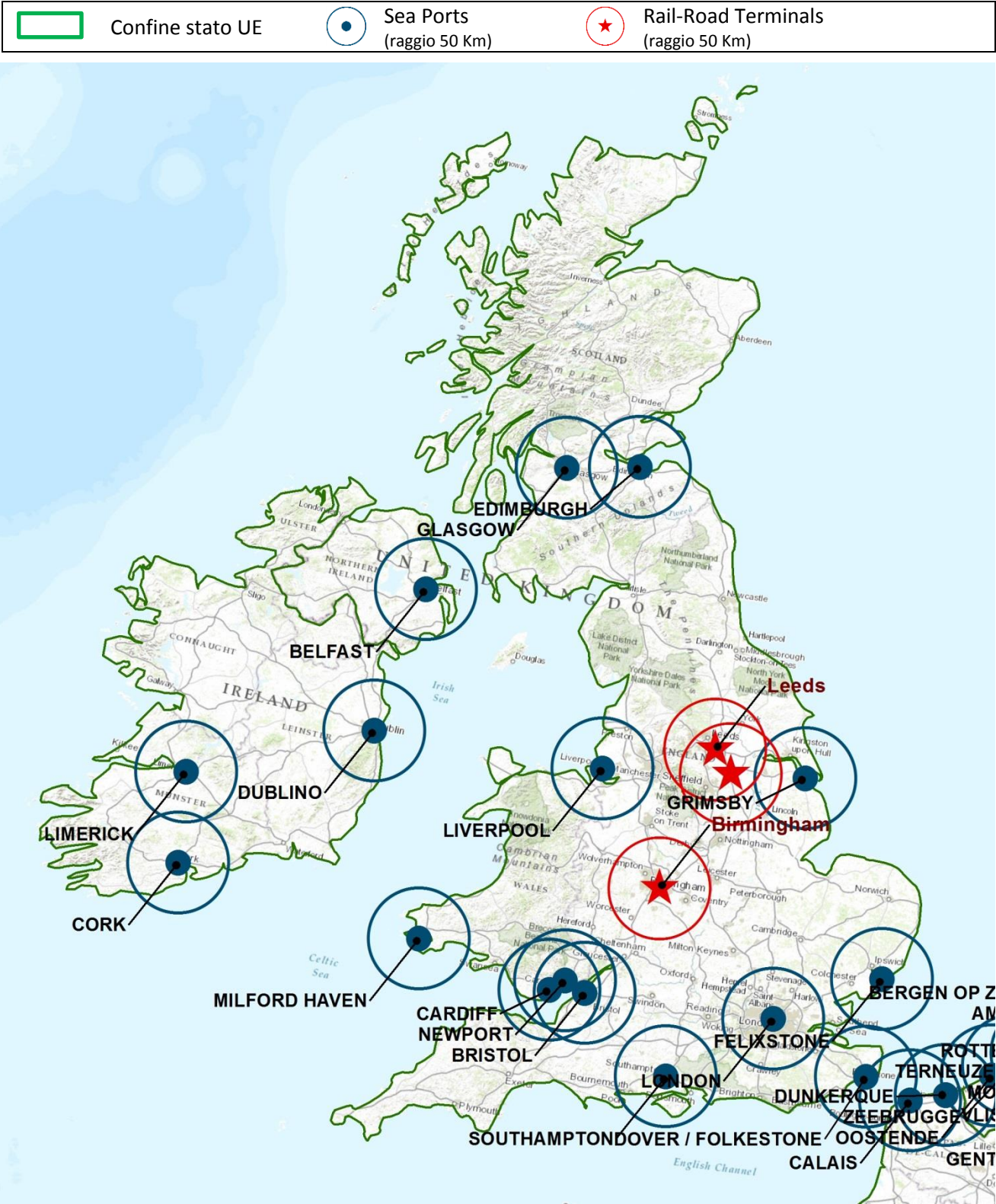
Porti marittimi (Sea Ports) e Terminal Ferroviari (Rail Road Terminal) appartenenti al TEN-T Core

1 – Svezia, Finlandia, Danimarca, Estonia, Lettonia, Lituania



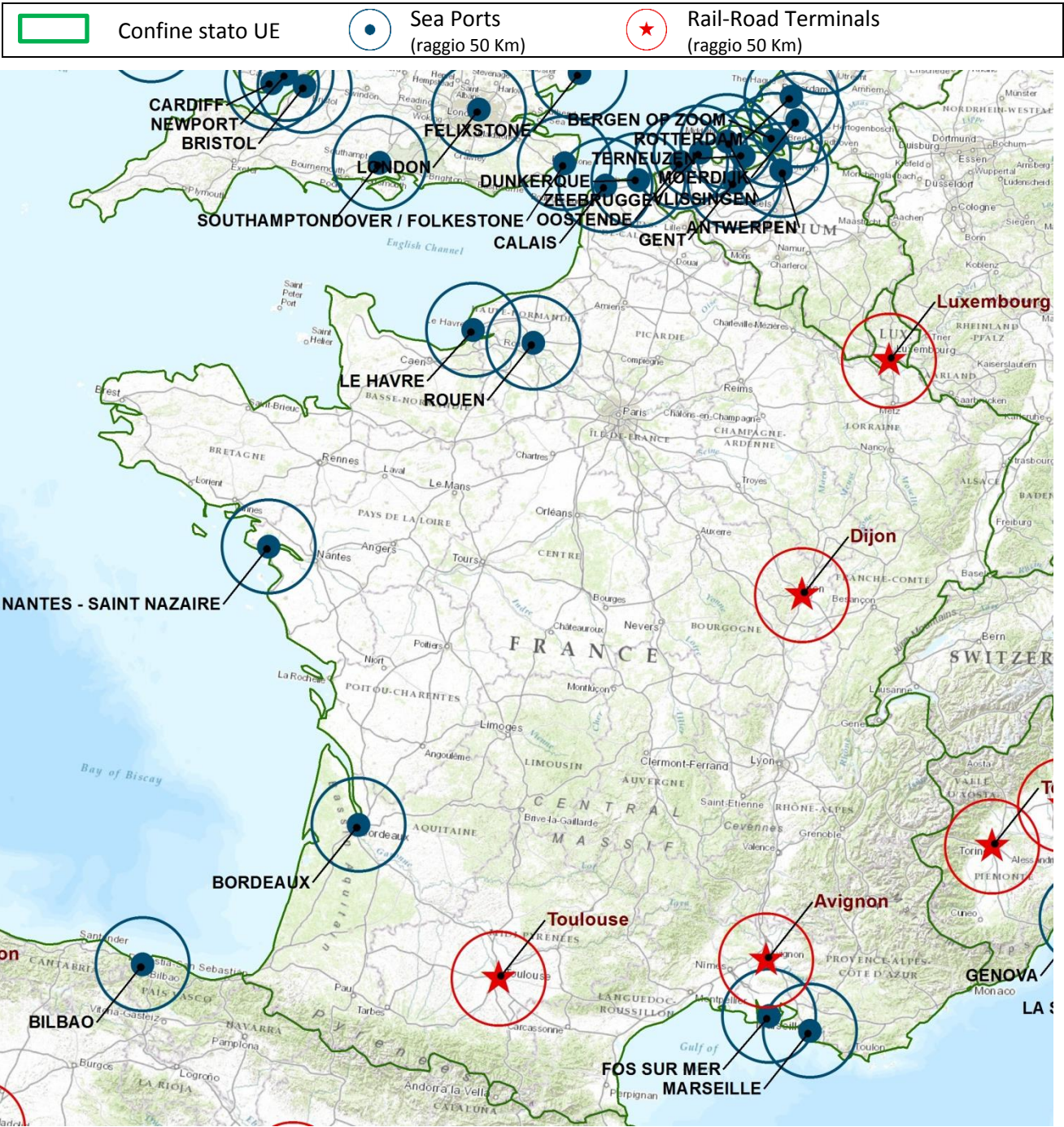
Porti marittimi (Sea Ports) e Terminal Ferroviari (Rail Road Terminal) appartenenti al TEN-T Core

2 – Gran Bretagna, Irlanda



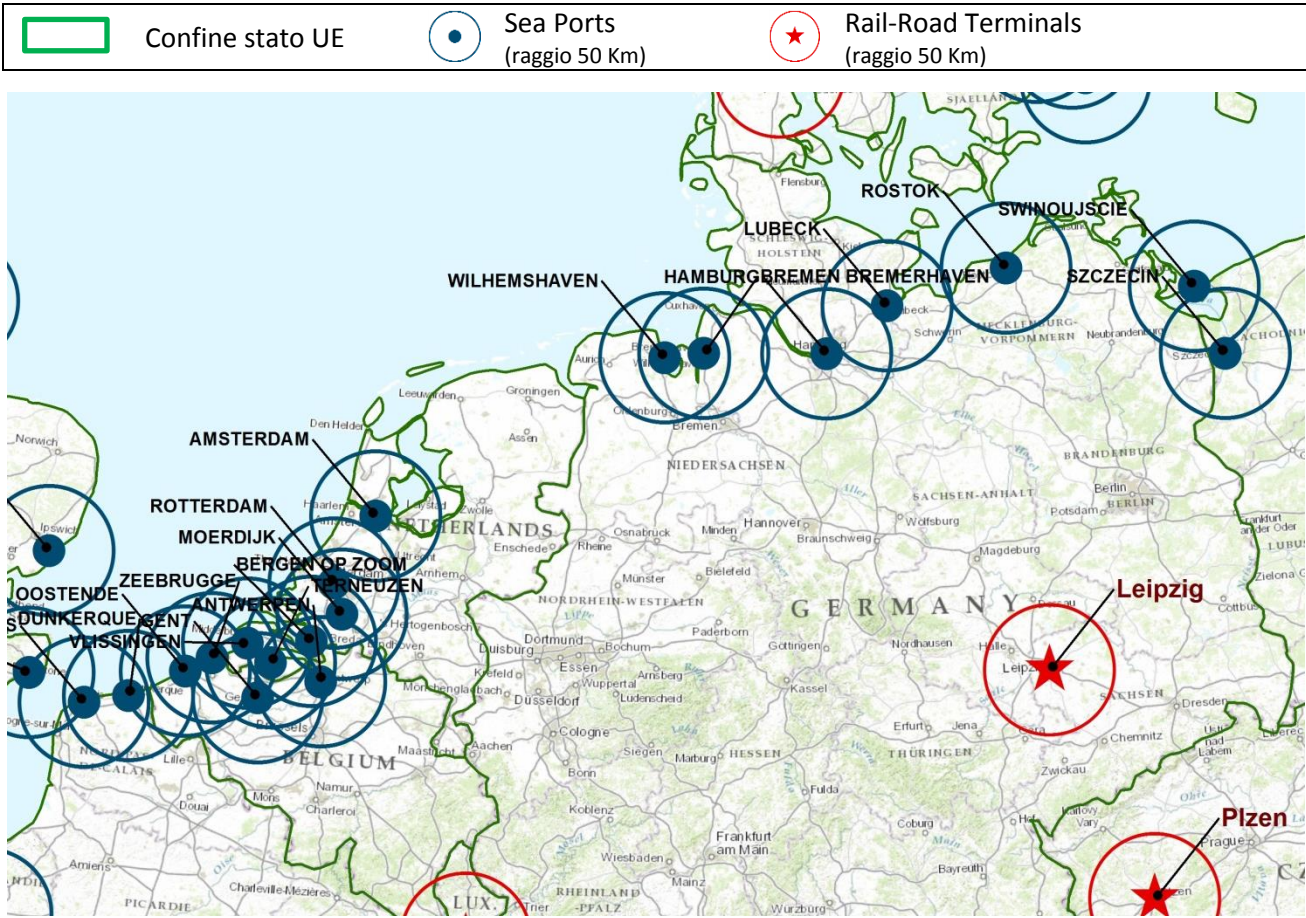
Porti marittimi (Sea Ports) e Terminal Ferroviari (Rail Road Terminal) appartenenti al TEN-T Core

3 – Francia, Lussemburgo

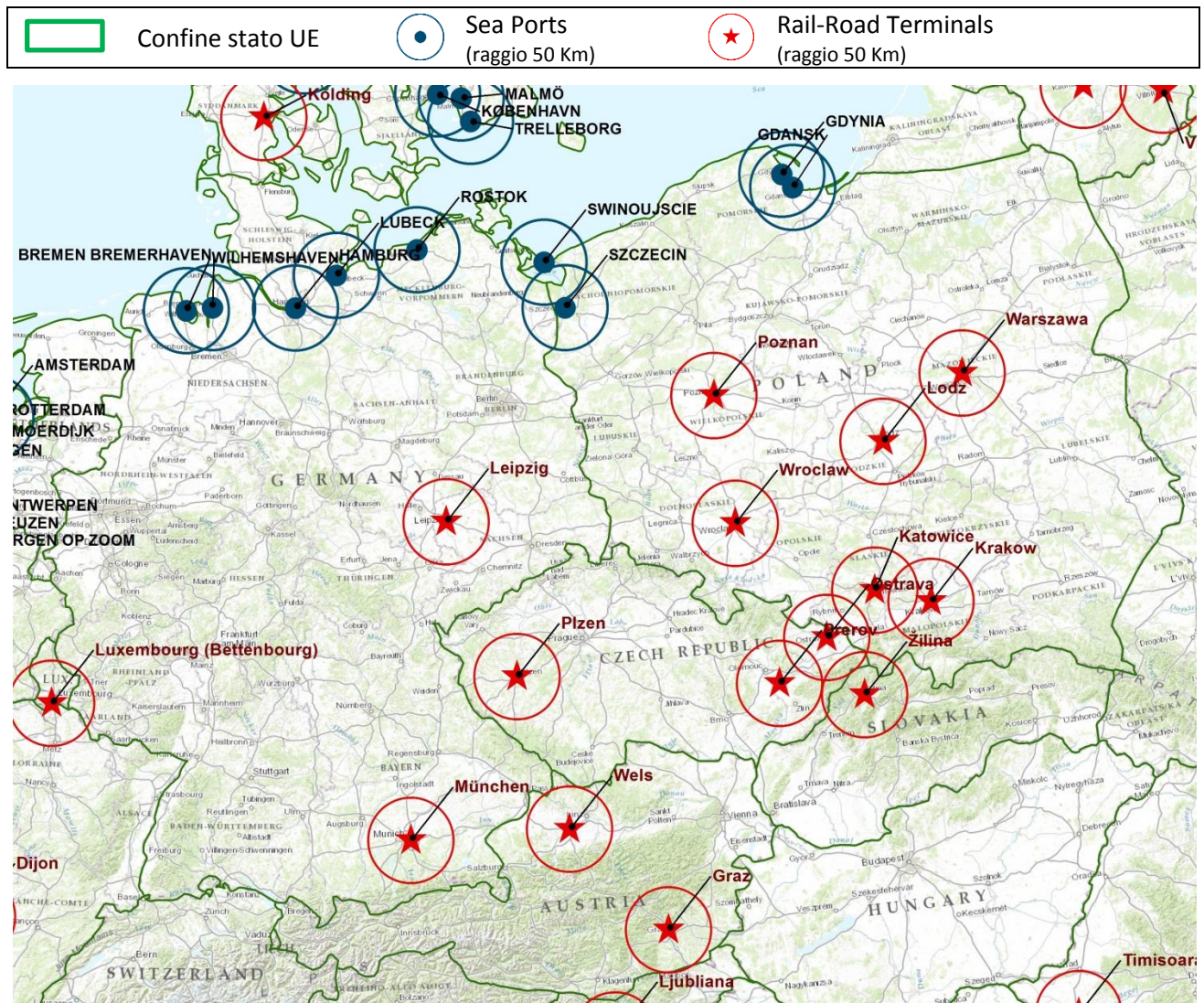


Porti marittimi (Sea Ports) e Terminal Ferroviari (Rail Road Terminal) appartenenti al TEN-T Core

4 – Belgio, Olanda, Germania

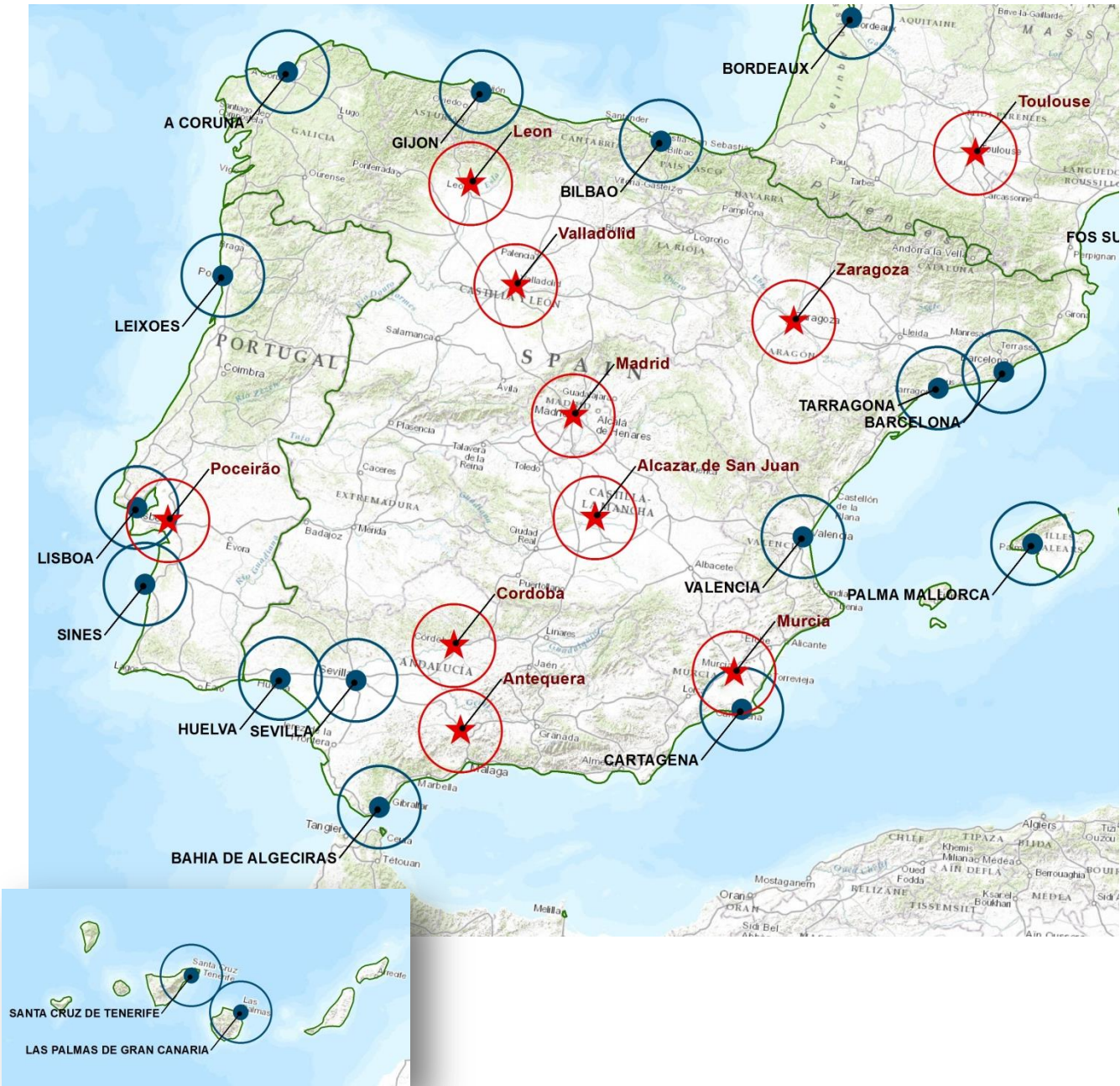
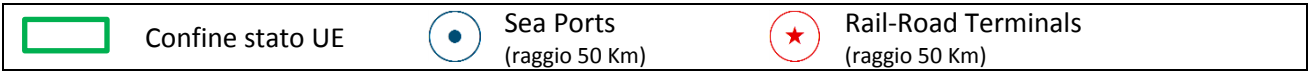


Porti marittimi (Sea Ports) e Terminal Ferroviari (Rail Road Terminal) appartenenti al TEN-T Core
5 e 6 – Germania, Polonia, Slovacchia, Repubblica Ceca, Austria, Ungheria



Porti marittimi (Sea Ports) e Terminal Ferroviari (Rail Road Terminal) appartenenti al TEN-T Core

7 – Spagna, Portogallo



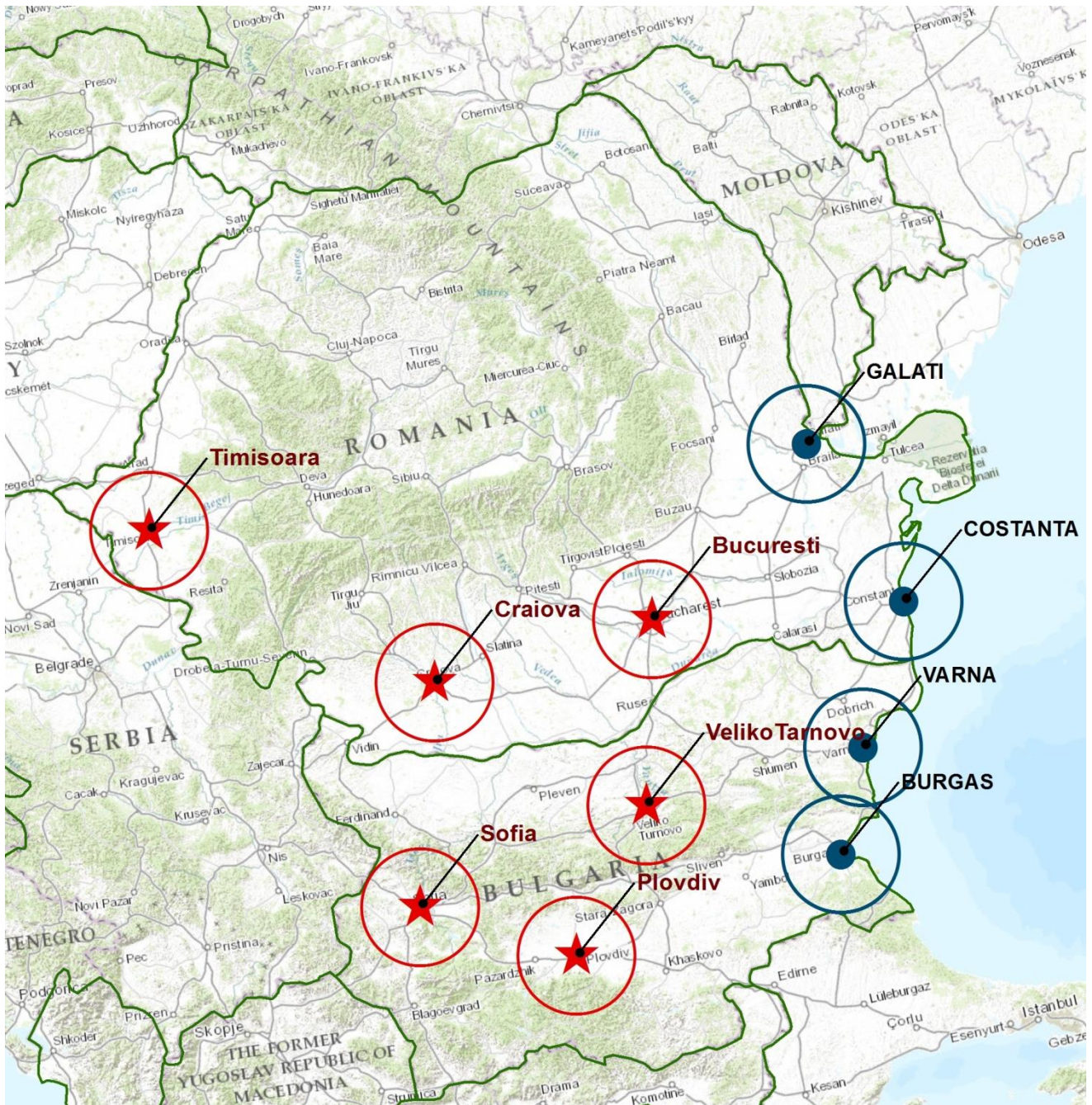
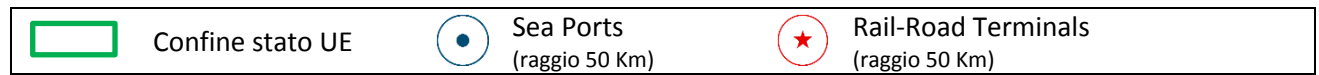
Porti marittimi (Sea Ports) e Terminal Ferroviari (Rail Road Terminal) appartenenti al TEN-T Core

8 – Italia, Slovenia, Croazia, Malta



Porti marittimi (Sea Ports) e Terminal Ferroviari (Rail Road Terminal) appartenenti al TEN-T Core

9 – Romania, Bulgaria



Porti marittimi (Sea Ports) e Terminal Ferroviari (Rail Road Terminal) appartenenti al TEN-T Core

10 – Grecia, Cipro

